

# RIGGER GLOVES / COW SPLIT LEATHER



**2440-1400**

**Palm :**  
Cow split leather patched palm in A/B grade, available color: nature, red, green., Fabric: Cotton drill



**STANLEY BRAND**

**Cow Split Leather Golden Yellow Double palm Glove**  
Rigger Style Palm Lines, Cotton Drill Yellow & Rubberized Cuff, Size: 10.5"  
Art No. : STN 2900 - 1300



**Cow split leather Royal Green Double palm Glove**  
rigger style palm lined, cotton drill black & rubberized cuff, Size: 10.5"  
Art No. : IJBD : 2700-200



**Cow Split Leather Royal Blue Double Palm Glove**  
Rigger Style Palm Lined, Cotton Drill Black & Rubberized Cuff, Size: 10.5"  
Art No. : IJBD : 2700-100



**Canvas Rubberized Cuff Double palm**  
Art No. : 2700 - 500



**Ijaz Blue Print Cow split leather Royal Green Double palm Glove**  
rigger style palm lined, cotton drill black & rubberized cuff, Size: 10.5"  
ART NO. : IJBD : 2700-400



**Cow Split AB Grade Leather Full Palm Glove**  
Rigger Style Palm Lined, Green Gumtli, Back & Rubberized Cuff, Size:10.5," & 14".  
ART No. : 1669



**Cow Split Leather, Back Cotton Strip Rubberized Cuff, Full Lining, 3" Cuff**  
SIZE: 26 CM ART-No:1005



**GREEN GUMTTI Cow Split AB Grade Leather Patch Palm Glove,**  
Rigger Style, Cotton Back & Rubberized Cuff  
Size:10.5," ART No. : 1670



# RIGGER GLOVES / COW SPLIT LEATHER



S 2511

**Flower Glove :**  
Palm Sheep Leather 2.5"  
Cuff Split Leather



**C 2510**  
**Flower Glove :**  
Palm Cow split leather 2.5"  
Cuff Split Leather



1349

**Cow Split AB Grade**  
**Leather Full Palm Glove**  
Rigger Style Palm Lined  
Stripped Cotton Back &  
Cuff. Size : 10.5" Rubberized cuff.  
CE Approved Comply with  
EN 407 & EN 388



Cow split leather palm glove rigger style, palm lined, nature cotton back & caves Pasted cuff. Size: 10.5"  
ART No. P 999



1200 - 1200

**Cow Split A Grade**  
**Leather Full Palm Glove**  
Rigger Style Palm Lined  
Stripped Cotton Back &  
Cuff. Size : 10.5" Rubberized cuff.  
CE Approved Comply with  
EN 407 & EN 388



**White Color Nobic Glove**  
Goat Grin Leather 3"  
Rubberized Cuff  
Half / Full Lining Elastic green  
Size: 26 Cm Art-No: WN 1935



**SKY GLOVE** S 815  
**A Grade Cow Split Leather**  
100% Cotton Drill Cloth,  
3" Rubberized Cuff, Size: 10.5"  
Back Cross Leather  
CE Approved Comply with  
EN 407 & EN 388



**CULLI GLOVES**  
Cow Split Leather, 3" Elastic Cuff  
Full Leather Palm  
Full 100% Cotton Drill Cloth Back  
SIZE: 26 CM ART-No:CG341



**Denam Jeen Gloves**  
Cow Split Leather  
Patch palm size : 26cm  
3" Cuff Back Cotton  
Demean Cloth  
Art-No:3313



**FURNITURE GLOVE**  
Art No. : F 986



**Furniture Glove**  
Black Cow grain leather  
with 3" rubberized cuff, Size: 10.5"

F 3001



# WELDER / COW SPLIT LEATHER GLOVES



**WGT : 207**

**Cow Split Leather Welding Gloves**  
 Back full pcs. of leather a grade  
 Full Inner Flees Lining  
 Full Black Leather Piping Covering to Seem  
 Inside of Cuff Cotton Lining  
 Size : 16" = 40cm  
 CE Approved Comply with EN 407 EN 388  
 Color : Red



**WGGT : 210**

**Cow Split Leather Welding Gloves**  
 Back full pcs. of leather a grade  
 Full Inner Flees Lining  
 Full Yellow Leather Piping Covering to Seem  
 Yellow Double palm for extra protection  
 Inside of Cuff Cotton Lining  
 Size : 16" = 40cm  
 CE Approved Comply with EN 407 EN 388  
 Color : Green



**WGY : 212**

**Cow Split Leather Welding Gloves**  
 Back full Pcs. of leather A grade  
 Full Inner Flees Lining  
 Inside of Cuff Cotton Lining  
 Size : 16" = 40cm  
 Color : Brown



**WGG : 206**

**Cow Split Leather Welding Gloves**  
 Back full pcs. of leather a grade  
 Full Inner Flees Lining  
 Inside of Cuff Cotton Lining  
 Size : 16" = 40cm  
 Color : Royal Blue



**WGR : 203**

**Cow Split Leather Welding Gloves**  
 Back full pcs. of leather A grade  
 Full Inner Flees Lining  
 Back of Cuff Cotton Lining  
 Size : 16" = 40cm  
 Color : Red



**WGW : 204**

**Cow Split Leather Welding Gloves**  
 Back full pcs. of leather A grade  
 Full Inner Flees Lining  
 Back of Cuff Cotton Lining  
 Size : 16" = 40cm  
 Color : Gray



**D 221**

**LEATHER DRIVING GLOVES**  
 Straight thumb  
 full goat leather size : 10.5"  
 back cotton piping



**TM : 4000**

**ARGON TIG MASTER WELDING GLOVES**  
 Palm & Back Goat Leather  
 Cow Slip Leather cuff with cotton piping  
 Brown Color and Natural Color  
 Size : 12"



**TW : 210**

**ARGON TIG WELDING GLOVES**  
 Palm & Pack Goat Leather  
 Cow Slip Leather cuff with cotton piping  
 Natural Color  
 Size : 15"



# WELDER'S SAFETY GARMENTS



**Leather Trouser**  
Cow split leather Size : M TO 2XL  
Color Natural  
Elastic on back for adjustment  
Button for adjustment  
Art No. 2700



**Full Pcs. Leather apron**  
Cow split leather Size : 24 x 36" & 36 x 42"  
Color Natural & Brown, Cotton  
Black piping border  
Adjustment with buckle  
Art No. 1000



**Welder Leather Jacket**  
Cow split leather  
Size : XL, 2 XL, Color Natural & Brown  
Adjustment button on sleeves  
Art No. 2500



**Leather apron**  
Cow split leather  
Size : 24 x 36, 36 x 42, 36 x 48"  
Color Natural & Brown  
Cotton Black piping border  
Adjustment with buckle  
Art No. 2200



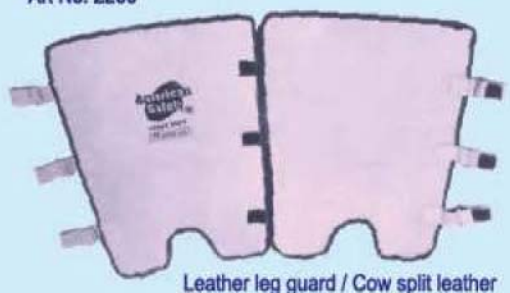
**Leather leg guard + shoe cover**  
Cow split leather  
Size : 16", Color Natural  
full back Velcro for adjustment  
elastic under shoe covering  
Art No. 900



**Leather sleeves**  
Cow split leather  
Size : 23 x 11"  
Color Natural & Brown  
Cotton Black piping border  
Adjustment with buckle  
Art No. 900



**Welder Leather Jacket**  
Cow split leather  
Size : XL, 2 XL, Color Natural & Brown  
Cotton Green Piping border  
Adjustment button on sleeves  
Art No. 2400



**Leather leg guard / Cow split leather**  
Size : 16", Color Natural  
back Velcro & buckle for adjustment  
Art No.: 800



# COTTON GLOVES



**NH 19B**

**Description :** 10 gauge cotton liner, palm with pvc dots  
**Liner Colors :** White

**Coating Colors :** Any Colors

**Applications :** Refrigerated areas, Food processing  
General maintenance, Parts handling  
Shipping and receiving, Bottling industries  
Package handling, Farm and gardening  
General purpose work, Assembly, packing and packaging,  
general maintenance, electronics



**NH 19**



**KV 112**

**KEVLAR GLOVE**

100% Kevlar string knit, 10 gauge  
260 Degree Heat Protection  
Cut and Heat Resistant



**NH 16**

**NH 17**

**NH 15 POLKA DOT COTTON DRILL GLOVES**

Men's Cotton drill glove, with PVC POLKA DOTS  
100% Cotton Elastic Wrist Red & Natural Colour  
Economical light weight : 8 oz  
Medium weight: 10 oz, Heavy weight 12 oz, Size : 10"



**NH 13**

**COTTON DRILL GLOVES**

Men's Cotton drill glove  
100% Cotton Elastic Wrist Red & Natural Colour  
weight: 650 To 900 Gm/Doz  
Construction 8 to 12 oz  
Size : 26 cm



**NH 18T**

Gray & Natural 100% cotton &  
Poly cotton seamless gloves  
Two-side PVC dots.  
Size : 10.5"



**DP-1009**

Drill Mitten Gloves  
Different Quality Inside Jute & Towel



**DP-1006**

Hotmill Gloves  
Double Palm & Thumb Int/Ext/Raising,  
Cuff Size 6-cm to 15-cm with  
Lining Jute Jersey Back Side.  
Full & Half Knuckle Protection  
16-oz to 24-oz Quality



**NH 20**

Gray & Bleached White 100% cotton &  
Poly cotton seamless  
Gloves. 450 gm., Size : 10"



**NH 22**

Gray & Bleached White 100% cotton &  
Poly cotton seamless  
Gloves. 800 gm., Size : 10.5"



# PVC RUBBER & CHEMICAL GLOVES



**FC 719**

### PVC DIPPED GLOVE

Full Coated  
PVC coated glove, interlock cotton liner, knit wrist, size : 26 cm  
Red color CE approved  
comply with EN 420, EN 388.



**HC 718**

### PVC DIPPED GLOVE

Open back Coated  
PVC coated glove, interlock cotton liner, knit wrist, size : 26 cm  
Red color CE approved  
comply with EN 420, EN 388.



**G.Y. 8111**

### EN388 & CE3111

13 gauge polyester or nylon liner, pvc palm coated  
Liner Colors : White, Black, Red



**YH 721**

Yellow Nitrile coated open back, Interlock lined, knit wrist.  
Size : 25cm



**FC 717**

### PVC DIPPED GAUNTLET

PVC fully dipped gauntlet, interlock cotton liner  
Length: 27 cm, 35 cm, 40cm, 45 cm, CE approved  
comply with EN 420, EN 388.



### Blue Nitrile Gloves

Full coated Knit wrist  
Interlock Liner  
Color available in Yellow and Orange also.  
Size 9 and 10  
EN 388



### Blue Nitrile Gloves

Full coated with Safety Cuff Interlock Liner/Jersey Liner  
Color available in Yellow and Orange also.  
Size 9 and 10  
EN 388



Red PVC Double dipped, Rough finish  
Interlock lined, 27 cm, 30 cm, 35 cm  
40 cm, 45 cm  
comply with EN 420, EN 388.



Green PVC Double dipped, Rough finish  
Flees lined, 27 cm, 30 cm, 35 cm  
40 cm, 45 cm  
comply with EN 420, EN 388.

## LATEX INDUSTRY GLOVES

Nature latex industrial glove  
2 - Color construction  
red inner black outer un-lined length 35 cm  
SG-100-Smooth finish, Medium wight = 100 g.  
SG-200-Smooth finish, Medium wight = 200 G.  
SGW-100-Wrinkle finish, Medium wight = 100 G.  
SG-200-Wrinkle finish, Medium wight = 200 G.



### Nitro Sole by Lake Land GL1015

Green nitrile, abrasion cut and puncture resistant, extensive chemical protection Embossed no slip wet or dry grip  
CE EN 388, 374-3, 374-2.  
Length: 34 cm., 40 cm., 48 cm.  
Size: 8, 9, 10, 11.



# LATEX NITRILE & PU COATED GLOVES



Y.G.L. 8551



EN388  
3444  
CE

Y.B. 2551



B.R. 2526

**Description** : 10 gauge polyester or T/C liner, palm coated with 100% natural rubber, crinkle finish

**Liner Colors** : Yellow, Grey, Black, Red

**Coating Colors** : Blue, Green, Orange, Black

## Latex Gloves for General Purpose

Many of your general purpose applications call for dexterity as well as protection. The solution is latex gloves. This category of gloves features a durable, comfortable liner and a protective coating for outstanding dexterity and hand protection. It provides excellent durability in the industrial workplace and feature a general purpose poly-cotton latex coating processed.

## Latex Coated Gloves Features

Feel the power you get from a combination of cut, abrasion puncture resistance; superior wet and dry grip; and unbelievable comfort. Latex coated gloves feature a soft gray, seamless poly/cotton knit liner that is palm-dipped with a textured, natural rubber coating. The uncoated back allows air circulate which keeps hands cooler and drier, and the fully coated thumb provides added protection in this high-risk area. Our glove are build to last.

## Applications

General Maintenance, Shipping & Receiving, Assembly, Concrete & Brick Handling, Lumber Handling, General Plant Use, Cement Finishing, Roofing components, Packaging, Inspection, Precision assembly and When using Drilling, Steamfitting and Glass Installation (Glazing); a great alternative to leather!



Y.C. 2231

EN388 & CE4232

Y.C. 2121

EN388 & CE2221

# Power Tool

## Latex Foam Coated

G.F. 7131



N.H. 010

EN388  
2131  
CE



Y.B. 2551



## Applications

General Purpose

R.N. 90

**Description** : 13 gauge nylon or polyester liner coated with nitrile normal & crinkle finish

**Liner Colors** : White, Grey, Red, Yellow, Black

**Coating Colors** : Green, Blue, Grey, Yellow, Black

**Description** : 13 gauge nylon or polyester liner coated with nitrile normal & crinkle finish

**Liner Colors** : White, Grey, Red, Yellow, Black

**Coating Colors** : Green, Blue, Grey, Yellow, Black

## Applications

Handling and assembly of electronic components when using delicate tools and sensitive instruments Lightweight assembly work where a clean glove is preferred Excellent for pharmaceutical packaging, inspection, computer assembly, automotive assembly, small parts handling.



P.U.B. 72

EN388  
3444  
CE



P.U.W. 13





**WORK  
MASTER**



**Art. No. 1212**

**WORKMASTER POLY COTTON COVERALL**

Poly Cotton Pre-shrink Sanforized & Mercerized Coverall  
Construction 23X23 = 88X64  
Color : Light Blue, Dark Blue  
White, Gray, Beige, Red, Orange  
Size : S to 5XL



**Art. No. 1272**

Balaclava with multiple applications.  
Face Mask, Full Balaclava.

**Features:**

- 100 % Cotton Twill Fabric Upper
- 100 % Cotton Liner
- Antibacterial protection fabric
- Colour : Navy Blue



**Art. No. 1220**

**WORKMASTER POLY COTTON 2 PCS OR PANT & SHIRT**

Poly Cotton Pre-shrink Sanforized & Mercerized Coverall Uniform  
Construction 23X23 = 88X64  
Color : Light Blue, Dark Blue, Beige  
Size : S to 4XL



**Art. No. 1217**

**POLY COTTON LAB COAT**

Brand : Workmaster  
Size : M to 4XL  
Construction 23X23 = 86X56  
Color : White, Light Blue and Dark Blue



Beige    Green    Yellow    White    Red    Dark Blue    Gray    Orange    Light Blue



# COVERALL & LABOUR UNIFORMS



**Art No.: P989**

**PRIME CAPTAIN COVERALL**

100% Cotton Pre-shrink Sunforized & Mercerized Coverall Construction  
 21x21=108x58, Color : Light Blue, Dark Blue, Red, Orange, Gray, White & Green. 195 to 200 GSM  
 Size: S to 5XL

**Art No.: 1200**

**PRIME CAPTAIN JACKET & TROUSER**

Cotton Pre-Shrunk Sanforized - Mercerized  
 No Color Bleeding, Fast Color, Fabric Construction  
 21x21=108x58, 195 to 200 GSM  
 Color : Light Blue, Dark Blue, Beige  
 Size : S To 4XL

**Art No.: C9797**

**CAPTAIN COVERALL**

100% Cotton Coverall  
 Size : S to 4XL  
 Color : Light Blue, Dark Blue, Red, Orange, Beige, White, Gray, 195 GSM  
 Made in Pakistan

**AVAILABLE COLOURS**





Art No.: P989

## PRIME CAPTAIN

Cotton Pre-Shrunk Sanforized - Mercerized  
 No Color Bleeding, Fast Color, Fabric Construction  
 195 to 200 GSM, 21x21=108x58,  
 Color : Light Blue, Dark Blue, Red, Orange,  
 Beige, White, Gray  
 Size : S To 5XL



COVERALL (SIZE IN INCH)

COTTON PRE-SHRINK

SIZE	S	M	L	XL	2XL	3XL	4XL	5XL
CHEST	44	46	48	51	53	55	57	59
WAIST	41	43	44.5	48	50	52	54	56
SEAT	43	45	47	50	52	54	56	58
OVERALL LENGTH	61	61.4	62.4	63	64	65	65	66

### AVAILABLE COLOURS



Art No.: 1200

## PRIME CAPTAIN JACKET & TROUSER

Cotton Pre-Shrunk Sanforized - Mercerized  
 No Color Bleeding, Fast Color, Fabric Construction  
 21x21=108x58, 195 to 200 GSM  
 Color : Light Blue, Dark Blue, Beige  
 Size : S To 4XL



SHIRT & PANT (SIZE IN CM)

COTTON PRE-SHRINK

SIZE	S	M	L	XL	2XL	3XL	4XL	5XL
CHEST	100	105	110	115	120	125	130	135
WAIST	84	88	92	96	100	104	108	112
SEAT	100	104	108	112	116	120	124	128
LENGTH	71	73	75	77	79	81	83	85
PANT LENGTH	99	101	103	105	107	109	111	113



# FLAME RETARDANT & REFLECTIVE COVERALL



**F1022**

## FLAME RETARDANT COVERALL

100% Cotton Pre Shrink  
 Fabric Construction 10X10 = 72X44  
 Size : M to 4XL  
 Color : Orange, Royal Blue  
 Confirms to European Standard EN 531  
 International Standard ISO 11612



**Art No.: B 1300**

## Bip Type Pant

100% Cotton  
 185 to 240 Gsm  
 Colour: Navy Blue & Light Blue  
 Confirmed EN Standard

**Art No.: 1063**



Cover all with  
 Reflective Tape



**Art No.: 1041**



**Art No 1035**

## REFLECTIVE COVERALL

Front & Back 3M Reflective Tape  
 100% Cotton Pre Shrink Fabric 260 GSM  
 Size: Orange Red Light Blue and Navy Blue  
 Confirm to European Standard EN 531  
 International Standard ISO 11612



**Art No 1026 Proban Coveralls**

Heavy duty overall 100% cotton drill with Proban flame retardant finish. Suitable for a variety of working conditions where flame retardant overalls are required.

- Conforms to dual standard EN531 and EN470.
- Concealed stud front.
- Two chest patch pockets with concealed single stud flap.
- Back pocket and rule pocket.
- Reinforced stress points.
- Side swing pockets in self fabric, side access.
- Cuffs with stud closure.
- Studded neck closure.

## AVAILABLE COLOURS



Beige Green Yellow White Red Dark Blue Gray Orange Light Blue





**STYLE NO. RC 2122**

**PVC/Polyester / PVC Rain Suit**

Fabric : 0.28 to 0.32mm PVC/Polyster/PVC  
Attached Hood with Drawstring and Stoppers  
Storm Front with Zipper and Snaps Closure  
Ventilated Cape Yellow and Green Underarm Air Vents  
Inner Wind Cuffs 2 Pockets with Flaps in Front

**STYLE NO. RC 2125**

**PVC/Polyester / PVC APRON**

Size: 120 x 90 cm

- Colour: Yellow, White & Green
- with 2 cotton Rope for faster
- 1 mtr. Length



**STYLE NO. RC 2117**

**PVC/Polyester / PVC Raincoat**

Fabric : 0.28 to 0.32mm PVC/Polyster/PVC  
Detachable Hood with Drawstring and Stoppers  
Storm Front with Plastic Snaps Closure  
Ventilated Cape Back and Underarm Air Vents  
2 Slash Pockets with Flaps in Front  
Sleeve Opening Adjusted by Plastic Snaps



## PARKA

**STYLE NO. FY 1653**

**3 in 1 Parka**

**Outjacket:**

Fabric: 0.18mm 170T Polyester with PVC coating

Color: Navy Blue

- Attached hood concealed in the collar with drawstring and stoppers
- Storm front with zipper and cupreous snaps closure
- 1 Mobile phone pocket on left chest
- 1 Pocket with flap on right chest
- 2 Pockets with flap in front
- Waist adjustable with drawstring and stoppers

**Interactive Jacket:**

Outfabric: 170T Polyester taffeta

Lining: 100% cotton checkers

Padding: 100% Polyester 160g/m2

- Attached to the outjacket with cupreous snaps
- Front with cupreous snaps closure
- Corduroy in inner collar
- Detachable sleeves with zippers
- 2 Pockets in front
- 1 Inner pocket on left chest
- Adjustable snaps on both sweep sides
- Rib cuffs

**FLORECENT COLOR PARKA WITH REFLECTIVE TAPE**

Color: Yellow & Orange

Size: M to 4XL

OUTSHELL: 170T Polyester/PVC

Lining: 190T Polyester Taffeta

Padding: 180g/m2 100% Polyester

Quilted in the way of diamond.

Local reflective Tapes up to

EN-471 Class II Standard.



**STYLE NO. 1650**





# SAFETY SHOES



**WORKER**  
**ART NO. W 64**  
 COW SPLIT LATHER  
 WITH STEEL TOE  
 AND STEEL MID SOLE  
 CONFIRMED  
 EN 345 STANDARD



**JOGGER**  
 FULL GRAIN LEATHER UPPER  
 MIDDLE, ART. NO. SA-9951 B  
 EN 345, STEEL TOE AND STEEL MID PLATE  
 PU OUT SOLE, SIZE : 39 TO 46, ITALIAN DESIGN



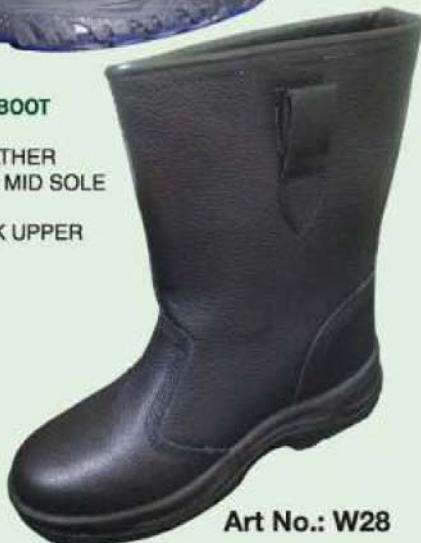
**JOGGER**  
 FULL GRAIN LEATHER UPPER,  
 FULL ANKLE  
 ART. NO. SA-995  
 EN 345,  
 STEEL TOE AND STEEL MID PLATE  
 PU OUT SOLE,  
 SIZE : 39 TO 46  
 ITALIAN DESIGN



**POWER WELDER BOOT**  
**ART No. W 27**  
 COW SPLIT LEATHER  
 STEEL TOE AND MID SOLE  
 SIZE 40 TO 45  
 BROWN & BLACK UPPER



**2020P**  
**POWER FULL GRAIN LEATHER**  
 EN 345, S1P, STEEL TOE 200 JULIES STEEL MID PLATE  
 PU OUT SOLE, SIZE : 39 TO 46  
 DUAL DENSITY, ITALIAN DESIGN



**Art No.: W28**



**POWER EXECUTIVE**  
**COW GRAIN LEATHER**  
**ART. NO. SA-145**  
 EN 345, STEEL TOE AND  
 PU SOLE, SIZE : 39 TO 46





**AMERICAN SAFETY**

**ART NO K027**

HIGH CLASS SAFETY SHOE  
COW GRAIN LATHER  
CE APPROVED EN 345  
STELL TOE AND PLATE 200 JULES  
PU OUT SOLE, SIZE: 39 TO 46



**AMERICAN SAFETY**

**ART. NO. K025**

FULL GRAIN LEATHER UPPER,  
LOW ANKLE  
EN 345,  
STEEL TOE AND STEEL MID PLATE  
PU OUT SOLE,  
SIZE : 39 TO 46



OUTSOLE

**DEFENSE**

**ART NO D 9315**

COW GRAIN LATHER  
BLACK & GRAY LACE, CE APPROVED EN 345  
STELL TOE AND PLATE 200 JULES  
PU OUT SOLE, SIZE: 39 TO 46



**BOXER**

**ART NO B-032**

COW GRAIN LATHER  
CE APPROVED EN 345  
STELL TOE AND PLATE 200 JULES  
PU OUT SOLE, SIZE: 39 TO 46

**DEFENSE LOW ANKEL**

**ART NO D1120**

COW GRAIN LEATHER  
CE APPROVED EN 345  
STELL TOE AND PLATE 200 JULES  
PU OUT SOLE, SIZE: 39 TO 46



**ART NO. : R 87**

**RESPITEX WITHOUT LACE**

HEAVY DUTY  
ITALY BRAND  
FULL GRAIN LEATHER  
STEEL MID PLATE AND STEEL OUT SOLE  
CONFORMED STANDRAD EN345



**ART NO. : R 93**

**RESPITEX**

HEAVY DUTY  
ITALY BRAND  
FULL GRAIN LEATHER  
STEEL MID PLATE AND STEEL OUT SOLE  
CONFORMED STANDRAD EN345

**RESPITEX**

HEAVY DUTY - ITALY BRAND  
UPPER COW SPLIT LEATHER  
LINING BREATHABLE CAMBRELLE  
STEEL MID PLATE AND STEEL OUT SOLE  
CONFORMED STANDRAD EN345  
OIL/SLIP RESISTANT PU SOLE

**ART NO. : R 960**



ANTI PUNCTURE PERFORATION RESISTANT



METATARSAL PROTECTION



ANTI BACTERIAL BREATHABLE INSOLE



HYDRO CARBON RESISTANT



SHOCK ABSORBER



GRAIN LEATHER



OIL RESISTANT



ANTISTATIC



STEEL TOE 200J



WATER RESISTANT UPPER



SLIP RESISTANT



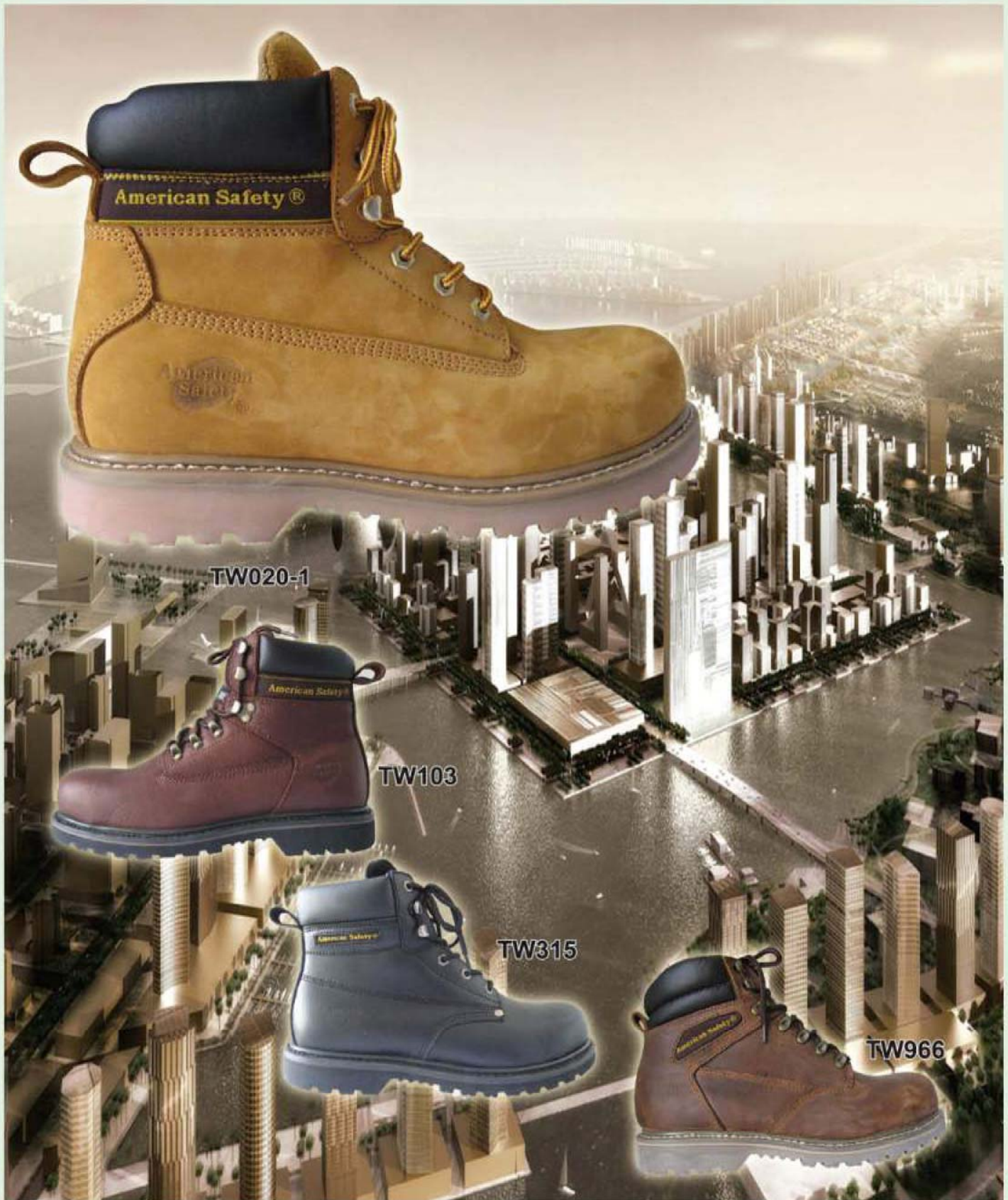
COLD/HEAT INSULATION



ABRASION RESISTANT



# AMERICAN SAFETY BOOT



**Art No.: TW020-1**

Upper : Yellow Nubuck  
Lining : Cambrella  
Midsole : Rubber  
Toe : Steel Cap  
Construction : Goodyear Welt  
Oil Resistance Antislip Techno Felex

Standard : EN 20345

**Art No.: TW966**

Upper : Crazy Horse  
Lining : Cambrella  
Midsole : Rubber  
Toe : Steel Cap  
Construction : Goodyear Welt  
Oil Resistance Antislip Techno Felex

**Art No.: TW103, TW315**

Upper : Brown & Black Full Grain Leather  
Lining : Cambrella  
Midsole : Rubber  
Toe : Steel Cap  
Construction : Goodyear Welt  
Oil Resistance Antislip Techno Felex





ART. 500



ART. 45 - L2061

**ART. 500 - SAFETY NITRILIC PVC BOOTS CE EN ISO 20345 S5**

- Upper: PVC **Made in Italy**
- Sole: PVC/Nitrile
- Blended compounds resistant to lime, industrial oils, petroleum, fats, acid and caustic soda as requested by CE EN ISO 20345 S5
- Steel Toecap - Steel Midsole - Antislip EN 13287/04 - Antistatic
- Energy absorption on seat region - Reinforced toe and heel
- Ankle protection - Resistant at low temperatures - Sizes available: 36 - 48 - Packing: Nylon Polybag
- Cartons: 5 or 6 pairs

**mvColours:**

- Yellow with black sole (Safety G) - Green with black sole (Safety V) - Black with black sole (Safety N)
- White with white sole (Safety B) Certificat of omologation CE EN ISO 20345 S4
- N° 17705312 of 01/08/2005 Certificat of omologation CE EN ISO 20345 S5 N° 17705311 of 01/08/2005

**Upper: PVC - Sole: PVC Made in Europe**

- Blended compounds resistant to lime, industrial oils, petroleum, fats, acid and caustic soda as requested by CE UNI EN 347
- Antislip - Antistatic - Energy absorption on seat region
- Reinforced toe and heel
- Ankle protection - Resistant at low temperatures
- Sizes available: 36 - 48 - Packing: Nylon Polybag
- Cartons: 10 pairs

Available also  
Green with honey sole (ART. 45 - L2060)  
Green with black sole (ART. 45 - L2062)  
Black with black sole (ART. 45 - L2061)

Certificat of omologation  
CE UNI EN 347 N° 17700431



**ART. 600 S5**

Standard colours			
Black/Black	Green/Black	Yellow/Black	White/Grey
Special colours			
Upper	Sole		
Black	Red	Red	Red
Black	Green	Green	Green
Blue	Red	Red	Red
Blue	White	White	White
Green	Honey	Honey	Honey
White	Green	Green	Green

Steel mid sole and steel toecap  
Antistatic Anti slip  
Energy absorption on seat region  
Resistant to lime, industrial oils, oils and fuel resistant 40-46

Sizes  
Cartons 6 pairs  
Packing: Poly bag

**MADE IN ITALY**

Available also:  
CE EN ISO 20345 S4 with only steel toecap

**Art. 60B "Food Industry" SAFETY NITRILIC PVC LONG BOOTS CE EN ISO 20345 S4**



Standard colours  
White/Grey  
Special for food industry, anti animal fats  
Steel toecap  
Antistatic  
Anti slip  
Energy absorption on seat region  
Resistant to lime, industrial oils, oils and fuel resistant  
Sizes 40 - 46  
Cartons 6 pairs  
Packing: Poly bag

Available:  
CE EN ISO 20345 S5  
MADE IN ITALY



ART - BB - 1920



ART - BY - 1922



ART - NO - YB - 1917



ART - NO : GT - 1999

**SAFETY RAIN BOOTS**

Black/Yellow Yellow/Black Green/Tan & Black/Black  
Size : 40-46, Height : 370mm-395mm  
Steel Toe & Steel Plate  
100% PVC, PVC Injection, Oil, Acids, Alkalis and Fats Resistant.  
For mining, Oil Field, Farming, Chemical related industries  
General construction etc., EN 345. 99. S5. CE 96, Brand : American Safety



# EYE PROTECTION



**M.A.33**  
**BLUE FRAME/ DARK AF LENS**  
**ANSI Z87**  
**MADE IN TAIWAN**



**M.A.72**  
**BLACK FRAME/ I/O MIRROR LENS**  
**ANSI Z87.1**



**M.A.42**  
**GREEN FRAME/ CLEAR AF LENS**  
**ANSI Z87.1**



**M.A.99**  
**BLUE FRAME/ CLEAR AF LENS**  
**PASS ANSI Z87.1 AND EN 166F**

**AB 56**  
**BLACK LENS**  
**COMPLY WITH**  
**ANSI Z87.1 CE EN 166F**  
**MADE IN TAIWAN**



**AB 77**  
**CLEAR LENS**  
**COMPLY WITH**  
**ANSI Z87.1 CE EN 166F**



**AB 95**  
**SMOKE LENS INDOOR OUTDOOR**  
**COMPLY WITH**  
**ANSI Z87.1 CE EN 166F**



**NO 26**  
**CLEAR LENS**  
**COMPLY WITH**  
**ANSI Z87.1 2003 CE EN 166F**  
**MADE IN TAIWAN**



**NO 49**  
**BLACK LENS**  
**COMPLY WITH**  
**ANSI Z87.1 2003 CE EN 166F**



**NO 81**  
**SMOKE LENS IN & OUTDOOR**  
**COMPLY WITH**  
**ANSI Z87.1 2003 CE EN 166F**

## WELDING GOGGLES

Soft vinyl frame, indirect ventilation, available frame color, clear, green blue, black & red. Available lens : darkening welding lens, clear PVC lens Metal mesh, Normal packing: clear polygag with header card.

Item Lens

<b>MA - 99</b>	Polycarbonate screen in clear color.
<b>MA - 72</b>	Polycarbonate screen in grey color.

**American Safety**

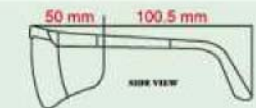
Safety Glasses



**ECONOMICAL SAFETY GLASS**  
**BLACK FRAME - CLEAR LENS**  
**FRAME : NYLON**  
**LENS : PC**  
**MADE IN CHINA**

MODEL NO.: A-B	
DES.	MATERIAL
FRAME	NYLON
FRONT ARM	NYLON
TIP	PC
SCREW 2.5*1.6*7.5	NICKEL SILVER
LENS (2.15 (THICKNESS))	PC

DIMENSION: Certificate:  
 WEIGHT: 36 grams Ansi / CE  
 FRAME WIDTH: 141 mm  
 TIPS WIDTH: 100 mm  
 TEMPLE LENGTH: 100.5 mm  
 MADE IN TAIWAN



MODEL NO.: N-O	
DES.	MATERIAL
FRAME	NYLON
FRONT ARM	NYLON
TEMPLE TIPS	PC
NOSE PAD	RUBBER
SCREW 2.5*1.6*6.0	NICKEL SILVER
LENS : 2.36 (THICKNESS)	PC

DIMENSION: Certificate:  
 WEIGHT: 28 grams Ansi / CE  
 FRAME WIDTH: 136 mm  
 TIPS WIDTH: 85 mm  
 TEMPLE LENGTH: 90 mm  
 MADE IN TAIWAN



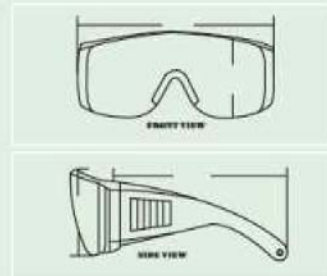




**S.A 13**  
**BLACK LENS**  
 COMPLY WITH  
 ANSI Z87.1 CE EN 166F  
 MADE IN TAIWAN

MODEL NO.: S-A	
DES.	MATERIAL
FRAME	
FRONT ARM	
TEMPLE	PC
SCREW	
LENS :2.23 (THICKNESS)	PC

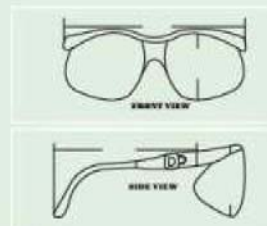
DIMENSION: Certificate:  
 WEIGHT: 44 grams Ansi / CE  
 FRAME WIDTH: 143 mm  
 TIPS WIDTH: 100 mm  
 TEMPLE LENGTH: 121 mm  
 MADE IN TAIWAN



**S.A 12**  
**CLEAR LENS**  
 COMPLY WITH  
 ANSI Z87.1 CE EN 166F



**PA 88**  
**CLEAR LENS**  
 COMPLY WITH  
 ANSI Z87.1 CE EN 166F  
 MADE IN TAIWAN



MODEL NO.: P-A	
DES.	MATERIAL
FRAME	NYLON
FRONT ARM	NYLON
TEMPLE TIPS	PC
SCREW 2.5*1.6*8.0	NICKEL SILVER
LENS : 2.45 (THICKNESS)	PC

DIMENSION: Certificate:  
 WEIGHT: 26 grams ANSI  
 FRAME WIDTH: 135 mm  
 TIPS WIDTH: 85 mm  
 TEMPLE LENGTH: 115 mm  
 MADE IN TAIWAN



**AN 81**  
**CLEAR LENS**  
 COMPLY WITH  
 ANSI Z87.1 CE EN 166F



**PA 44**  
**BLACK LENS**  
 COMPLY WITH  
 ANSI Z87.1 CE EN 166F



**AN 80**  
**BLACK LENS**  
 COMPLY WITH  
 ANSI Z87.1 CE EN 166F



**A.Q 89**  
**SMOKE TEMPLES WITH**  
**BLUE MIRROR LENS**  
 COMPLY WITH  
 ANSI Z87.1 CE EN 166F  
 MADE IN TAIWAN



**K 94**  
**BLACK LENS**  
 COMPLY WITH  
 ANSI Z87.1 CE EN 166F



**A.Q 55**  
**CLEAR TEMPLE WITH**  
**CLEAR LENS**  
 COMPLY WITH ANSI Z87.1 CE EN 166F  
 MADE IN TAIWAN



# BLUE EAGLE WELDING EQUIPMENT



**ART No. 633P WELDING HELMET**  
[ CE ] [ ANSI Z87 ] [ CSA Z94.3 ]  
(LENSES NOT INCLUDED)  
Lens Size: 4-1/4" x 2"  
Toughness and moisture Proof,  
Lift-front lens holder are insulated,  
Polypropylene shell.



**6PA2 CLIP-CAP WELDING HELMET [CE] [ANSI Z87]**  
(CAPS & LENS NOT INCLUDED)  
Lift-front lens holder,  
Lens Size: 4-1/4" x 2",  
Polypropylene shell, with ABS bracket.



**ART No. 633P WELDING HELMET**  
[ CE ] [ ANSI Z87 ] [ CSA Z94.3 ]  
(LENSES NOT INCLUDED)  
Lens Size: 4-1/4" x 2"  
Toughness and moisture Proof,  
Lift-front lens holder are insulated,  
Polypropylene shell.



**6PA2 CLIP-CAP WELDING HELMET [CE] [ANSI Z87]**  
(CAPS & LENS NOT INCLUDED)  
Lift-front lens holder,  
Lens Size: 4-1/4" x 2",  
Polypropylene shell, with ABS bracket.



**GW250 GAS WELDING GOGGLE**  
Lift-front type lenses holder,  
used for both of welding and  
chipping operations



**NP1064 GAS WELDING GOGGLE**  
Used in gas welding, cutting and  
brazing operations, scale no. 5-4.1.





**FC48 FACE SHIELD VISOR**  
[ CE ] [ ANSI Z87+ ] [ CSA Z94.3 ]  
POLYCARBONATE, Clear,  
8" x 15-1/2" x 1.0mm, aluminum bound.  
For high impact, penetration,  
heat, and splash resistance.



**Art No. : F.S 9213 [CE] [ANSI Z87] [CSA Z94.3]**  
**GRAINDING FACE SHIELD**  
Head band clear splash proof



**A2 VISOR BRACKET [ CE ] [ANSI Z87]**  
Impact-resistant ABS,  
use with "FC" series visors,  
fit in with regular safety cap



**B1YE BROW GUARD [CE] [ANSI Z87] [CSA Z94.3]**  
Impact-resistant ABS brow guard, yellow,  
with ratchet headgear HG1, use with "FC" series visors.



**FC48G4 FACE SHIELD VISOR [ANSI Z87+]**  
POLYCARBONATE, Dark Green, Scale No.5-4.1.,  
8" x 15-1/2" x 1.0mm, aluminum bound.  
For high impact, heat, UV, and splash resistance



**SG152 DUST GOGGLE**  
Used for average dust condition, lens 1.5mm  
Complied With [CE EN166] [ANSI Z87]



**SG154 CHEMICAL GOGGLE**  
Used for fine dust and chemical splash, lens 1.5mm.  
Complied with [CE EN166] [ANSI Z87]



**SEP 4951 - SILICON EAR PLUG**  
NPR 26db, available with or without cord. CE EN352-2 approved,  
(1 pc Polybox, 100 pcs in packet, 1000 pcs in carton)



**EM92BK EARMUFF**  
Color: Black, Blue & Red  
Very comfortable to wear, high-impact ABS ear cup,  
foam PVC head cushion,  
suitable for continuous use over long periods.



**EM62 EARMUFF**  
Light in weight,  
it can be worn in 3 positions-overhead,  
behind neck or under chin.



**NP353 EARPLUG**  
With case, key chain & neck string.



## Power Tool



HEAVY DUTY



**V-Guard**  
**EN3971 : 1995 + A1 2000**  
**GM-5 ABS**

Material :  
 ABS Engineering Plastic  
 is Exclusively for helmet Characteristics:  
 The design of the hat was classic V-tape,  
 so it enhance the anti-attack against the head.);  
 The both sides are equipped with the slot, you can wear  
 face protection and other sound-insulated equipments;  
 it can many kinds of adjustable suspension.



**Fiber Helmet**  
**GM-6 Safety Helmet (FRP)**  
**EN3971 : 1995 + A1 2000**

Materials:  
 Fiber Reinforces Plastics  
 Characteristics:  
 Both the sides are painted by environmental  
 oil, good appearance and steel. The hat  
 block was designed into dome with small  
 fringe. It can resist high temperature and  
 coldness. It obeys the GB2811-2007.  
 Standard: You can match it with many  
 kinds of adjustable suspension.



Large printable  
 area for company logos

ABS - 313

Attractive, modern design



Variable air vents  
 at the front and the back  
 of the helmet

ABS helmet for real  
 wear comfort  
 for fixing  
 ear muff

Size adjusters



PE - 808



ABS - 717

1. ABS Quality shell and any color is available
2. 4-points textile and ratchet harness
3. Confirm to CE EN397 standard

**EN3971 : 1995 + A1 2000**



Art No. : 775  
**HELMET ELASTIC  
 CHINSTRAP**

1. PE shell and any color is available
2. 6-points plastic and plug harness
3. Confirm to CE EN397 standard

## RATCHET WHEEL



Textile and ratchet harness

**SAFETY HELMET WITH RATCHET WHEEL**

PE Plastic & ABS High Density  
 EN 397,

Color : White, Yellow, Green, Red, Blue, Gray, Orange  
 Brand : American Safety

AVAILABLE COLORS :-



WHITE



YELLOW



GREEN



RED



BLUE



GRAY



ORANGE



# SAFETY BELT & HARNESS

**American Safety®**



**ART NO.: P822**  
**FALL PROTECTION SAFETY HARNESS**  
 POLYESTER WEB STRAPS.  
 CHEST & LEG ADJUSTING  
 BACK SUPPORT BELT  
 EN 361  
 ISO CERTIFIED



**FALL PROTECTION SAFETY HARNESS & SHOCK ABSORBER**  
**ART NO. : Y 904**  
 1.8 MTR POLYESTER LANYARD  
 WIDTH 60 MM - 2 SCAFFOLDING HOOK 22 KM  
 1 CARABINER HOOK - EN 355



**ART NO. H313**

**FALL PROTECTION SAFETY HARNESS**  
**POLYESTER WEB STRIPS**  
 1.8 METER POLYESTER LANYARD  
 WIDTH 60MM OPENING SCAFFOLDING HOOK  
 22KN  
 1 CARABINER HOOK AND 3 D RING  
 EN 361

Scaffolding Hook



**SAFETY SHOCK ABSORBER**

**ART NO. : S/H B-6**

1. Webbing-Material: polyester, Width: 30mm; net length: 1.3 m
2. One carabiner two scaffolding meet CE EN 362 standard
3. One shock absorber with rugged polyester cover



**FALL PROTECTION SAFETY HARNESS**  
 POLYESTER WEB STRAPS.  
 CHEST & LEG ADJUSTING  
 BACK SUPPORT BELT  
 EN 361  
 ISO CERTIFIED

EN361 Certificate



**DOUBLE SNAP SAFETY HOOK FOR SCAFFOLDING. OPENING 60MM**



**SAFETY SHOCK ABSORBER**

**ART NO. : S/H B-5**

1. Webbing-Material: polyester, Width: 30mm; net length: 1.3 m
2. Form snap hook and two carabiners meet CE EN 362 standard
3. One shock absorber with rugged polyester cover



**AMERICAN SAFETY - INDUSTRIAL SAFETY BELT**

**ART NO. : H 550**

1. Two side D-Ring (positioning) and tool bag;
2. 1-point adjustability.
3. 14 mm shock lanyard, Length 1.5 m
4. Single locking snap hook at the attachment
5. 58 mm polyester webbing

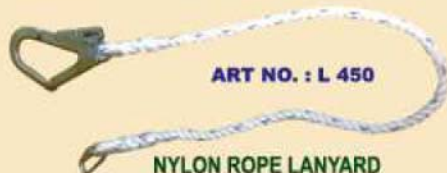


**ART NO.: SO 571**

**ENERGY ABSORBER NYLON ROPE LANYARD**  
 WITH 60mm OPENING SCAFFOLDING HOOK  
 CE EN 355



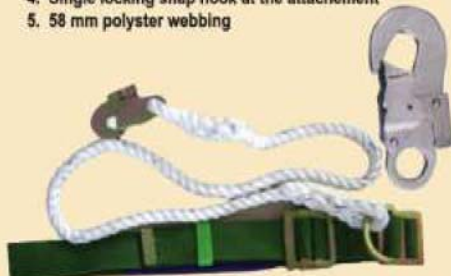
**FALL PROTECTION SAFETY HARNESS**  
 POLYESTER WEB STRAPS.  
 CHEST & LEG ADJUSTING  
 SCREW LOCKING SNAP HOOK  
 WEB COLOR : ORANGE, GREEN AND WHITE  
 EN 361, ISO CERTIFIED, H. 330



**ART NO. : L 450**

**NYLON ROPE LANYARD**

1. One Snap hook
2. 1.5 mtr. Nylon rope
3. One scaffolding hook EN 361



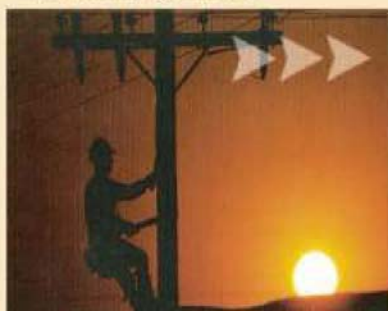
**AMERICAN SAFETY - INDUSTRIAL SAFETY BELT**

**ART NO. : H 990**

1. One side D-Ring (positioning) and tool bag;
2. 1-point adjustability.
3. 12 mm shock lanyard, Length 1.5m
4. Single locking snap hook at the attachment
5. 50 mm polyester webbing



**CARABINER**  
**SCREW LOCKING SNAP HOOK**  
 OPENING 16 MM  
 EN 362







EN136 : 1998



### GM-07AA Full Mask (canister)

**Materials:** high quality silica gel

**Features:** The high-quality silica gel is anti-aging, anti-allergic, and easy to clean; the design is according to the human body, combined with three-dimensional characteristics, to suit different faces. With Extra-wide window structure, the window is made from PC material, anti fog inside, anti-friction outside. The headband is fixed by five-point, making adjustment simple. It can match with various pipes, canisters and air ventilators.

EN140 : 1999



### GM-0503B Gas Mask (cartridge)

**Materials:** rubber

**Features:** The main part of the mask is molded by non-toxic rubber; the poison filter is standard, can connect to other pipes or small canisters. The poison filter is made of transparent material, so you can see the absorption of the activating carbon.

### Filter Guide

Respiratory protection with filters is dependent on the ambient air. In order to use filtering respirators, the type, properties and composition of the hazardous agent in the ambient air must be known. The oxygen content in the inhalation air must be at least 18% Vol. When using particle filters, no hazardous gases must be present; when using gas filters, no hazardous particles should be present, in case of doubt combined filter must be used.

Colour Mark	Type	Application	Class	Max allowed gas Concentration	Standard
Brown	A	Organic gases and vapours (boiling point >25°C)	1	1000 ml/min <sup>3</sup> (0.1 Vol %)	EN141 or EN143B7
			2	5000 ml/min <sup>3</sup> (0.5 Vol %)	
			3	10000 ml/min <sup>3</sup> (1.0 Vol %)	
Grey	B	Inorganic gases and vapours (not CO) i.e. Chlorine, H <sub>2</sub> S, HCN	1	1000 ml/min <sup>3</sup> (0.1 Vol %)	EN141 or EN143B7
			2	5000 ml/min <sup>3</sup> (0.5 Vol %)	
			3	10000 ml/min <sup>3</sup> (1.0 Vol %)	
Yellow	E	Sulphur Dioxide and acidic gases and vapours	1	1000 ml/min <sup>3</sup> (0.1 Vol %)	EN141 or EN143B7
Green	K	Ammonia and organic ammonia derivatives	1	1000 ml/min <sup>3</sup> (0.1 Vol %)	EN141 or EN143B7
			2	5000 ml/min <sup>3</sup> (0.5 Vol %)	
			3	10000 ml/min <sup>3</sup> (1.0 Vol %)	
Brown	AX	Organic gases and vapours (boiling point <15°C)	-	gr.1 100 ml/min <sup>3</sup> max 40 min gr.1 500 ml/min <sup>3</sup> max 20 min gr.2 1000 ml/min <sup>3</sup> max 60 min gr.2 5000 ml/min <sup>3</sup> max 20 min	EN371
Blue	NO-P3	Nitrogen Dioxides e.g. NO, NO <sub>2</sub> , NO <sub>x</sub>	-	Maximum allowed time of use 20 minutes	EN141 or EN143B7
Red	Hg-P3	Mercury Vapours	-	Maximum allowed time of use 50 hours	EN141 or EN143B7
Black	CO	Carbon Monoxide	-	Local guide lines	DIN 3181
Orange	Reactor P3	Radioactive Iodine	-	Local guide lines	DIN 3191
White	P	Particles	1	Efficiency	Low medium high
			2	Efficiency	
			3	Efficiency	



EN140 : 1999

### GM-0503D Gas Mask (cartridge)

**Materials:** high quality silica gel

**Features:** The high-quality silica gel is anti-aging, anti-allergic, and easy to clean; it wears conveniently; Spiral interface make it easy to change cartridge.



EN140 : 1999

### GM-0503E Gas Mask (double cartridges)

**Materials:** high quality silica gel

**Features:** The high-quality silica gel anti-aging, anti-allergic, easy to clean; it wears more fixed because of the Four-points; The double cartridge configuration extends its anti-virus preparation time and reduces the inspiration resistance.

### GM 303 & 306



### GM 304 & 305



### Single Cartridge 303 & 306 Double Cartridge 304 & 305 Chemical Dust & Gas Resistance Mask

Technique Files of Dust Mask against organic gas/acid gas TEST PROJECT STANDARD

1. Mask Appearance Mask looks smooth, no bubbles, no burr, no effect on gas-tight defect
2. Components with Strong > 49N
3. Mask of air flow resistance < 20Pa
4. Airtight of Valve > 20s(Humidity : 17-30OC, Relative Humidity : <75%)
5. Aging of Valve After aging fro 8hours under 100+2OC is not sticky, non-deformed; Air flow resistance >20s
6. Mask leakage coefficient <5%
7. Field of View Binocular vision : >65% Below:>35o

Item	Cartridge	Cartridge
9502-3000	1	Dust.
9502-3004	1	Chemical.
9502-3100	2	Dust.
9502-3104	2	Chemical
FTR 3000	Dust cartridge	
FTR 3004	Chemical cartridge.	

Please specify color of face piece : Black (BK), Green (GN), Blue (BE), Please also specify packing







**KF-009**  
Fabric : 100% Digital Net (Mesh)  
Fluorescent yellow, orange  
Size : Free



**KF-005**  
**CE EN471 CLASS II**  
Fabric : 100% Polyester tricot  
(woven, oxford or mesh)  
Flourescent yellow, orange  
Type : conform to requirements of EN471  
Size: Free



**KF-0011**  
Fabric: 100% Polyester Tricot  
Size : Free (66 cm W x 65 L)  
Flourescent yellow fabric 120g/M<sup>2</sup>  
Reflective Tape : EN471 Class 2  
Packing: 1 pc into a Polybag  
100 pcs into a Carton



**WL 1829002**



**WL 1829005**

4 pcs high brightness LEDs, high visibility (>500m);  
Working mode: Flashing-Bright  
Flash Frequency: 60/min  
Voltage: 6V (4R 25)  
With photoresistance, automatically flashing night  
and close daytime;  
Colors: Amber, Red, Yellow and so on  
Packing: 12 pcs/carton  
Carton size: 480x380x350mm

4 pcs high brightness LEDs, high visibility (>500m);  
Working mode: Flashing-Bright  
Flash Frequency: 60/min  
Voltage: 6V (4R 25)  
With photoresistance, automatically flashing night  
and close daytime;  
Colors: Amber, Red, Yellow and so on  
with metal bracket for fixing  
Packing: 12 pcs/carton  
Carton size: 480x380x350mm



**9001040**  
Heavy duty battery for flashing lamps

**ROAD WORK LIGHT (WITH LOCK)**

Lampshade : PS  
Battial Carpace : HDPE  
Light - House 2 pcs. LEDS  
Flash Frequency : 60 flashes/min. visible Distance 250-300miter

For two 6V 4R25 batteries :  
Battery Lift : 600-650 / 650-700  
continious minutes



1828001

1824001

1824003

1824002

**CautionTape**

Brand: Gamma & American Safety



**KF-003**  
**REFLECTIVE VEST, YELLOW/ORANGE**  
Net type, nylon fabric with  
both side 2" wide reflective tapes,  
Transparent Pocket Velcro



**BATON LIGHT**



**KF 0012**  
**Traffic Control Baton Light  
with 3 System**



# FIRST AID BOX

## GKB 300

### FIRST AID BOX (FOR 100 PEOPLE)

Box Size: 445x320x150mm

Made of qualified ABS, heavy and super strong, suitable for industry, With carry Handle, wall bracket and inside partition with covers

#### Contents :

Meet DIN14142 in ABS box code



#### FIRST AID KIT CONTENTS

- |                                    |          |
|------------------------------------|----------|
| 01. Gauke DIN 13168-D              | - 4 PKT  |
| 02. Surgical Gloves                | - 2 PKT  |
| 03. Round Banded                   | - 2 ROLL |
| 04. Gauze Bandage                  | - 1 PKT  |
| 05. Instant Cold Pack              | - 2 PKT  |
| 06. Alcohol pre pad                | - 20 PC  |
| 07. Gauke Sterile Gauze pad Small  | - 13 PKT |
| 08. Gauke Sterile Gauze pad Medium | - 12 PKT |
| 09. Gauke Sterile Gauze pad Large  | - 12 PKT |
| 10. Scissor                        | - 1 PAIR |
| 11. Safety Pin                     | - 5 PC   |
| 12. Small Band Aid                 | - 60 PC  |
| 13. Plastic with round band aid    | - 1 PC   |



## GKB 302

### FIRST AID BOX (FOR 50 PEOPLE)

Box Size: 390x275x135mm

Made of qualified ABS, heavy and super strong, suitable for industry, With carry Handle, wall bracket and inside partition with covers

#### Contents :

Meet DIN13157 in ABS box code



#### FIRST AID KIT CONTENTS

- |                                    |          |
|------------------------------------|----------|
| 01. Gauke DIN 13168-D              | - 2 PKT  |
| 02. Surgical Gloves                | - 2 PKT  |
| 03. Round Banded                   | - 1 ROLL |
| 04. Gauze Bandage                  | - 2 PKT  |
| 05. Instant Cold Pack              | - 2 PKT  |
| 06. Alcohol pre pad                | - 10 PC  |
| 07. Gauke Sterile Gauze pad Small  | - 6 PKT  |
| 08. Gauke Sterile Gauze pad Medium | - 6 PKT  |
| 09. Gauke Sterile Gauze pad Large  | - 6 PKT  |
| 10. Scissor                        | - 1 PAIR |
| 11. Safety Pin                     | - 5 PC   |
| 12. Small Band Aid                 | - 26 PC  |
| 13. Plastic with round band aid    | - 1 PC   |

#### FIRST AID KIT CONTENTS

- |                                    |          |
|------------------------------------|----------|
| 01. Gauke DIN 13168-D              | - 1 PKT  |
| 02. Surgical Gloves                | - 1 PKT  |
| 03. Round Banded                   | - 1 ROLL |
| 04. Gauze Bandage                  | - 1 PKT  |
| 05. Instant Cold Pack              | - 1 PKT  |
| 06. Alcohol pre pad                | - 5 PC   |
| 07. Gauke Sterile Gauze pad Small  | - 3 PC   |
| 08. Gauke Sterile Gauze pad Medium | - 3 PC   |
| 09. Gauke Sterile Gauze pad Large  | - 3 PC   |
| 10. Scissor                        | - 1 PAIR |
| 11. Safety Pin                     | - 4 PC   |
| 12. Small Band Aid                 | - 15 PC  |
| 13. Plastic with Round band Aid    | - 1 PC   |



## GKB 301

### FIRST AID BOX (FOR 25 PEOPLE)

Box Size: 320x220x130mm

Made of qualified ABS, heavy and super strong, suitable for industry, With carry Handle, wall bracket and inside partition with covers

#### Contents :

Meet DIN13157 in ABS box code



#### FIRST AID KIT CONTENTS

- |                                    |          |
|------------------------------------|----------|
| 01. Gauke DIN 13168-D              | - 1 PKT  |
| 02. Gauze Bandage                  | - 1 PKT  |
| 03. Alcohol pre pad                | - 10 PCS |
| 04. Gauke Sterile Gauze pad Small  | - 4 PCS  |
| 05. Gauke Sterile Gauze pad Medium | - 2 PCS  |
| 06. Gauke Sterile Gauze pad Large  | - 1 PC   |
| 07. Scissor                        | - 1 PAIR |
| 08. Safety Pin                     | - 4 PCS  |
| 09. Small Band Aid                 | - 50 PCS |
| 10. Cottonball                     | - 10 PCS |



## GKB 305 FIRST AID BOX (FOR 5 PEOPLE)